

SHKOLLA "MODEL" NË PRISHTINË

LLOGARITJA E NDRIÇIMIT / LIGHTING DESIGN

KLASA / CLASSROOM

Investitor: MASHT, Komuna e Prishtinës

Date: 15.11.2011
Operator: Gani LATIFI



Pristine
Republic of Kosova

Operator Gani LATIFI
Telephone +37744110557
Fax
e-Mail gani.latifi@gmail.com

Table of contents

SHKOLLA "MODEL" NË PRISHTINË

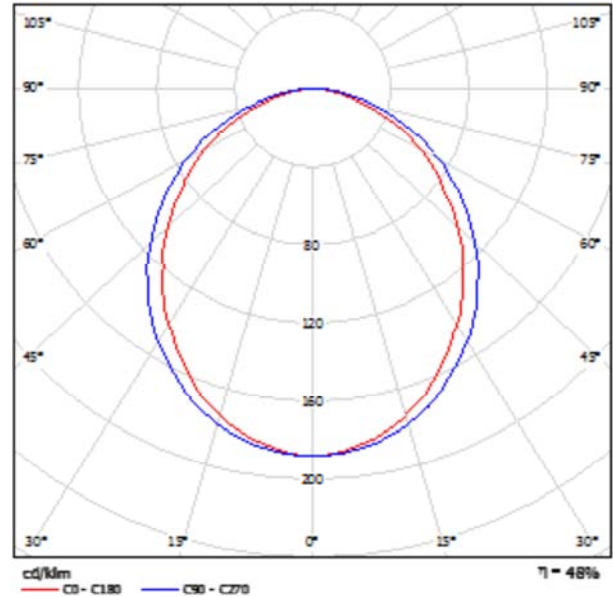
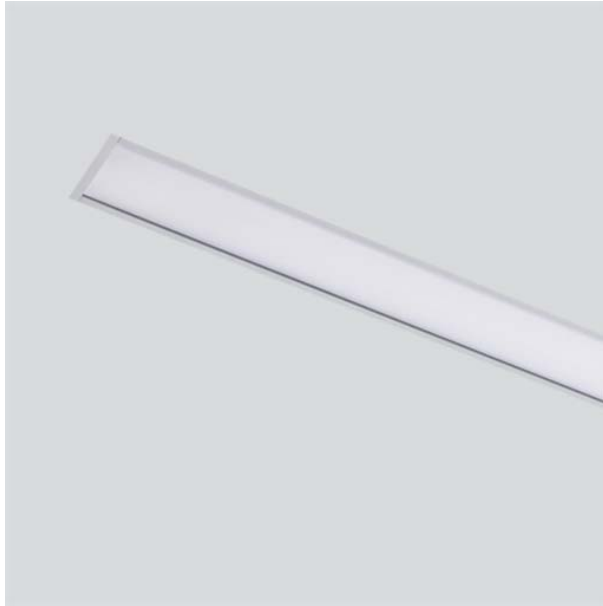
Project Cover	1
Table of contents	2
Intra 3.7134.2101.5 SWORD LINE RS GL 2x28W T16 EB	
Luminaire Data Sheet	3
Intra 2.1134.1350.1 201 AS 1x35W T16 EB	
Luminaire Data Sheet	4
Klasa	
Summary	5
Luminaires (layout plan)	6
3D Rendering	7
Room Surfaces	
Workplane	
Isolines (E)	8
Greyscale (E)	9

Pristine
Republic of Kosova

Operator Gani LATIFI
Telephone +37744110557
Fax
e-Mail gani.latifi@gmail.com

Intra 3.7134.2101.5 SWORD LINE RS GL 2x28W T16 EB / Luminaire Data Sheet

Luminous emittance 1:



Luminaire classification according to CIE: 100
CIE flux code: 50 81 97 100 48

Luminous emittance 1:

Starting module for recessed Sword Line systems
Body: made of extruded aluminium profile, silver grey or white
End caps: made of aluminium, silver grey or white
Diffuser: opal polycarbonate difuser, glow wire test 850°C
Two lamp versions are overlapped - eliminated shadow ascendency
Control gear: complete with electronic ballast (EB) or dimmable electronic ballast (DEB - DSI/1-10V/DALI); emergency version (EM) include also battery and inverter for continuous emergency lighting for minimum 60 minutes
Through wiring: 5 pole through wiring connection for EB, DEB (DSI/DALI) or EM EB line versions
Connector: mounted male GST connector for easy and fast line instalation
Power supply: 230V, 50Hz
Mounting: all necessary mounting accessories included
Maintenance: easy lamp replacement without tools

Glare Evaluation According to UGR										
		70	70	90	90	90	70	70	90	90
z Ceiling		90	30	90	30	30	90	30	90	30
w Walls		20	20	20	20	20	20	20	20	20
h Floor		20	20	20	20	20	20	20	20	20
Room Size	X	Y	Viewing direction at right angles to lamp axis				Viewing direction parallel to lamp axis			
2H	2H	19.0	20.3	19.3	20.6	20.6	19.5	20.8	19.8	21.0
	3H	20.4	21.5	20.7	21.8	22.1	21.0	22.2	21.3	22.4
	4H	20.8	21.9	21.2	22.2	22.5	21.6	22.7	21.9	23.0
	5H	21.1	22.1	21.5	22.4	22.7	22.1	23.1	22.4	23.4
	6H	21.2	22.2	21.5	22.5	22.8	22.2	23.2	22.6	23.5
4H	1.2H	21.2	22.1	21.6	22.5	22.8	22.5	23.2	22.7	23.6
	2H	19.7	20.8	20.1	21.1	21.4	20.1	21.2	20.4	21.5
	3H	21.3	22.2	21.6	22.6	22.9	21.8	22.7	22.1	23.0
	4H	21.8	22.7	22.2	23.0	23.4	22.5	23.3	22.9	23.6
	5H	22.3	23.0	22.7	23.3	23.7	23.0	23.7	23.4	24.1
5H	1.2H	22.4	23.0	22.8	23.4	23.8	23.2	23.9	23.7	24.3
	2H	22.4	23.0	22.8	23.4	23.8	23.4	24.0	23.8	24.4
	3H	22.1	22.8	22.6	23.2	23.6	22.7	23.5	23.1	23.7
	4H	22.7	23.2	23.1	23.6	24.1	23.4	23.9	23.8	24.5
	5H	22.9	23.3	23.3	23.8	24.2	23.6	24.1	24.1	24.8
1.2H	1.2H	22.9	23.3	23.4	23.8	24.3	23.8	24.2	24.3	24.7
	2H	22.2	22.7	22.6	23.2	23.6	22.7	23.5	23.1	23.7
	3H	22.7	23.2	23.2	23.6	24.1	23.4	23.9	23.9	24.5
	4H	22.9	23.3	23.4	23.8	24.3	23.7	24.1	24.2	24.8
	5H	22.9	23.3	23.4	23.8	24.3	23.7	24.1	24.2	24.8
Variation of the observer position for the luminaire distance 2										
S = 1.0H	+0.1 / -0.2				+0.1 / -0.1					
S = 1.5H	+0.3 / +0.8				+0.2 / +0.3					
S = 2.0H	+0.5 / +0.9				+0.3 / +0.6					
Standard table	5008				5008					
Correction	2.5				4.0					
Corrected Glare Indices referring to 500lm Total Luminous Flux										

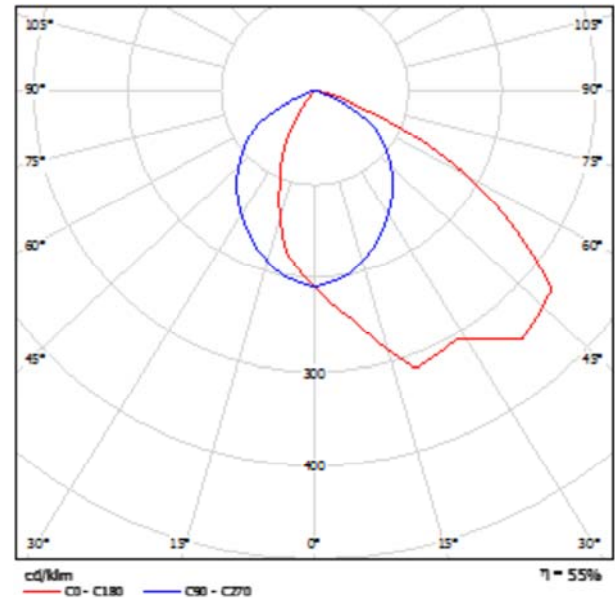
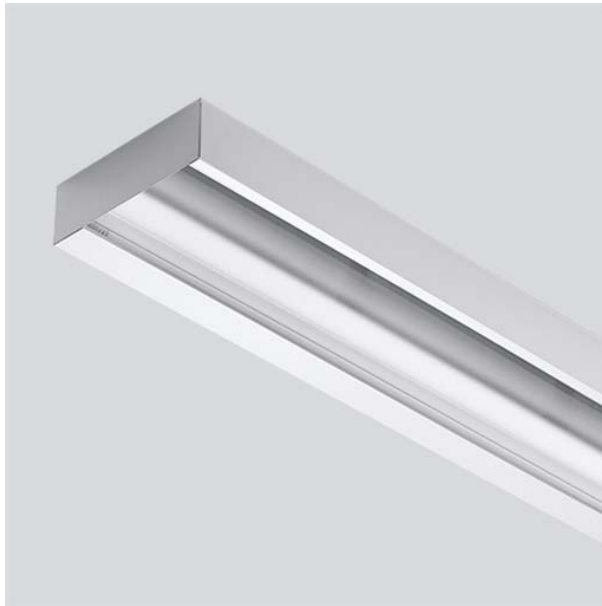


Pristine
Republic of Kosova

Operator Gani LATIFI
Telephone +37744110557
Fax
e-Mail gani.latifi@gmail.com

Intra 2.1134.1350.1 201 AS 1x35W T16 EB / Luminaire Data Sheet

Luminous emittance 1:



Luminaire classification according to CIE: 100
CIE flux code: 52 90 100 99 55

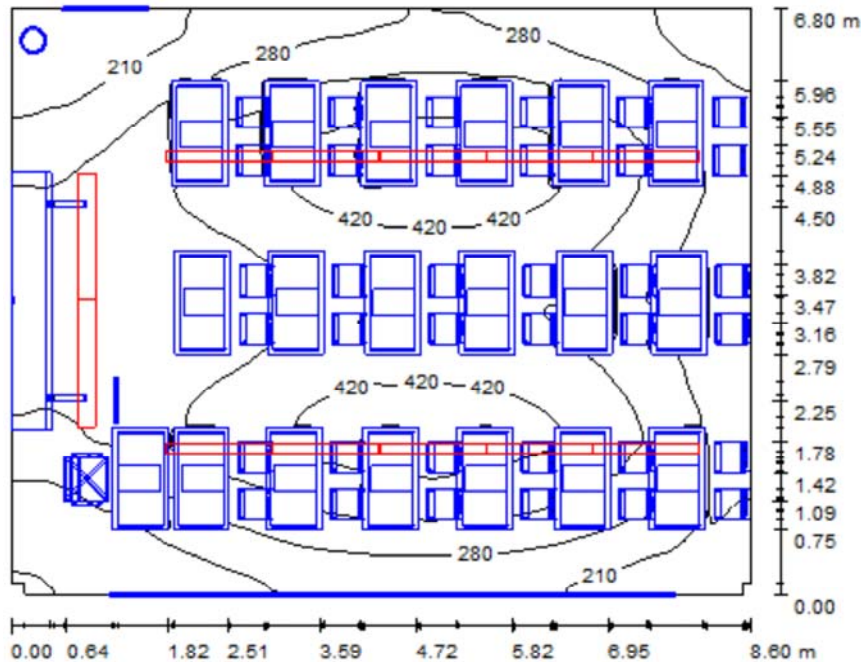
Due to missing symmetry properties, no UGR table can be displayed for this luminaire.

- Housing: steel sheet, white colour
- Painting: electrostatic powder coating, UV- stabilized, upon phosphate treatment
- Side shade: steel sheet, white colour
- Optics: satin aluminium asymmetrical parabolic reflector, anti-iridescence
- Control gear: complete with electronic ballast (EB) or dimmable electronic ballast (DEB - DSI/DALI)
- Power supply: 230V, 50Hz
- Maintenance: easy lamp replacement without tools

Pristine
Republic of Kosova

Operator Gani LATIFI
Telephone +37744110557
Fax
e-Mail gani.latifi@gmail.com

Klasa / Summary



Height of Room: 3.200 m

Values in Lux, Scale 1:88

Surface	u [%]	E_{av} [lx]	E_{min} [lx]	E_{max} [lx]	u0
Workplane	/	307	131	464	0.428
Floor	20	281	147	369	0.524
Ceiling	70	68	52	95	0.763
Walls (10)	50	159	44	508	/

Workplane:

Height: 0.850 m
Grid: 128 x 128 Points
Boundary Zone: 0.000 m

Illuminance Quotient (according to LG7): Walls / Working Plane: 0.522, Ceiling / Working Plane: 0.220.

Luminaire Parts List

No.	Pieces	Designation (Correction Factor)	I [lm]	P [W]
1	2	Intra 2.1134.1350.1 201 AS 1x35W T16 EB (1.000)	3300	38.0
2	10	Intra 3.7134.2101.5 SWORD LINE RS GL 2x28W T16 EB (1.000)	5200	60.0
Total:			58600	676.0

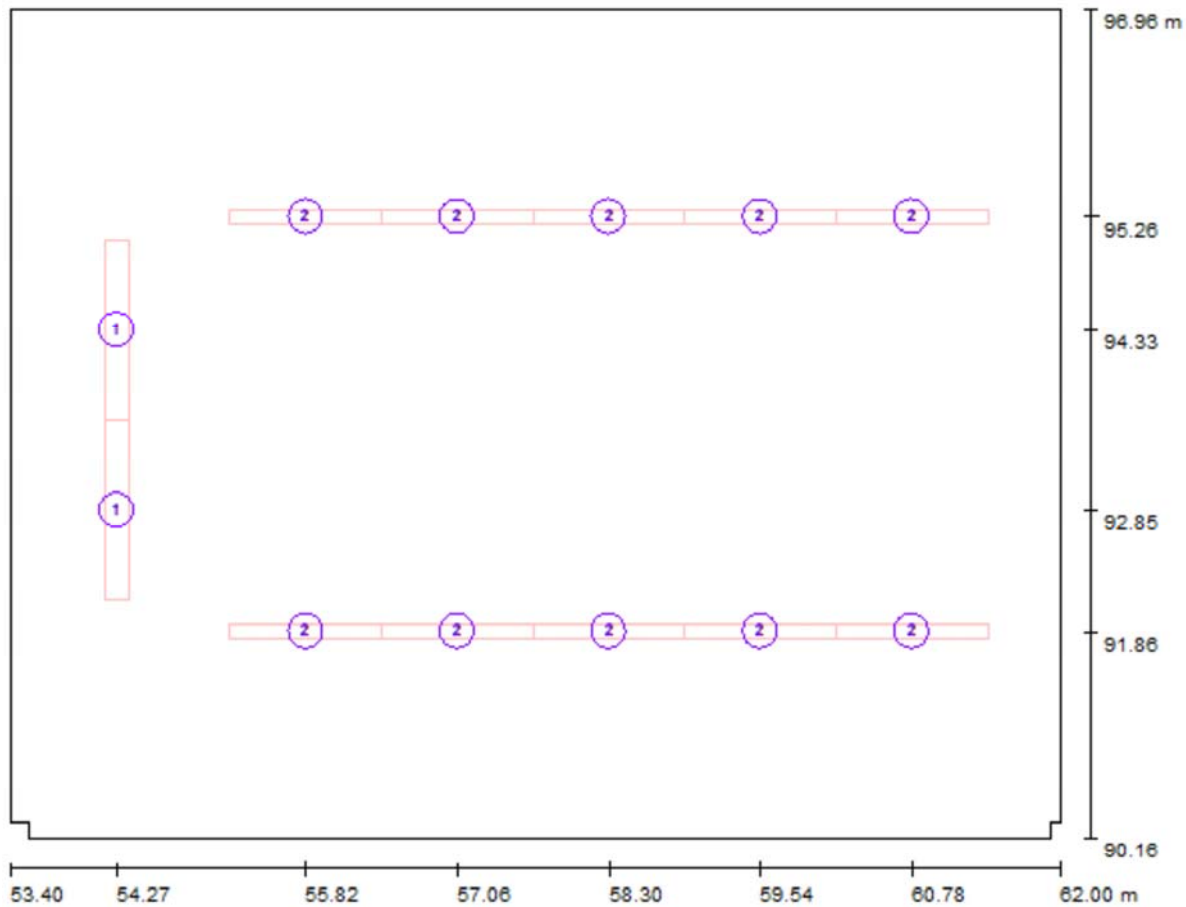
Specific connected load: $11.57 \text{ W/m}^2 = 3.77 \text{ W/m}^2/100 \text{ lx}$ (Ground area: 58.45 m²)



Pristine
Republic of Kosova

Operator Gani LATIFI
Telephone +37744110557
Fax
e-Mail gani.latifi@gmail.com

Klasa / Luminaires (layout plan)



Scale 1 : 62

Luminaire Parts List

No.	Pieces	Designation
1	2	Intra 2.1134.1350.1 201 AS 1x35W T16 EB
2	10	Intra 3.7134.2101.5 SWORD LINE RS GL 2x28W T16 EB



Pristine
Republic of Kosova

Operator Gani LATIFI
Telephone +37744110557
Fax
e-Mail gani.latifi@gmail.com

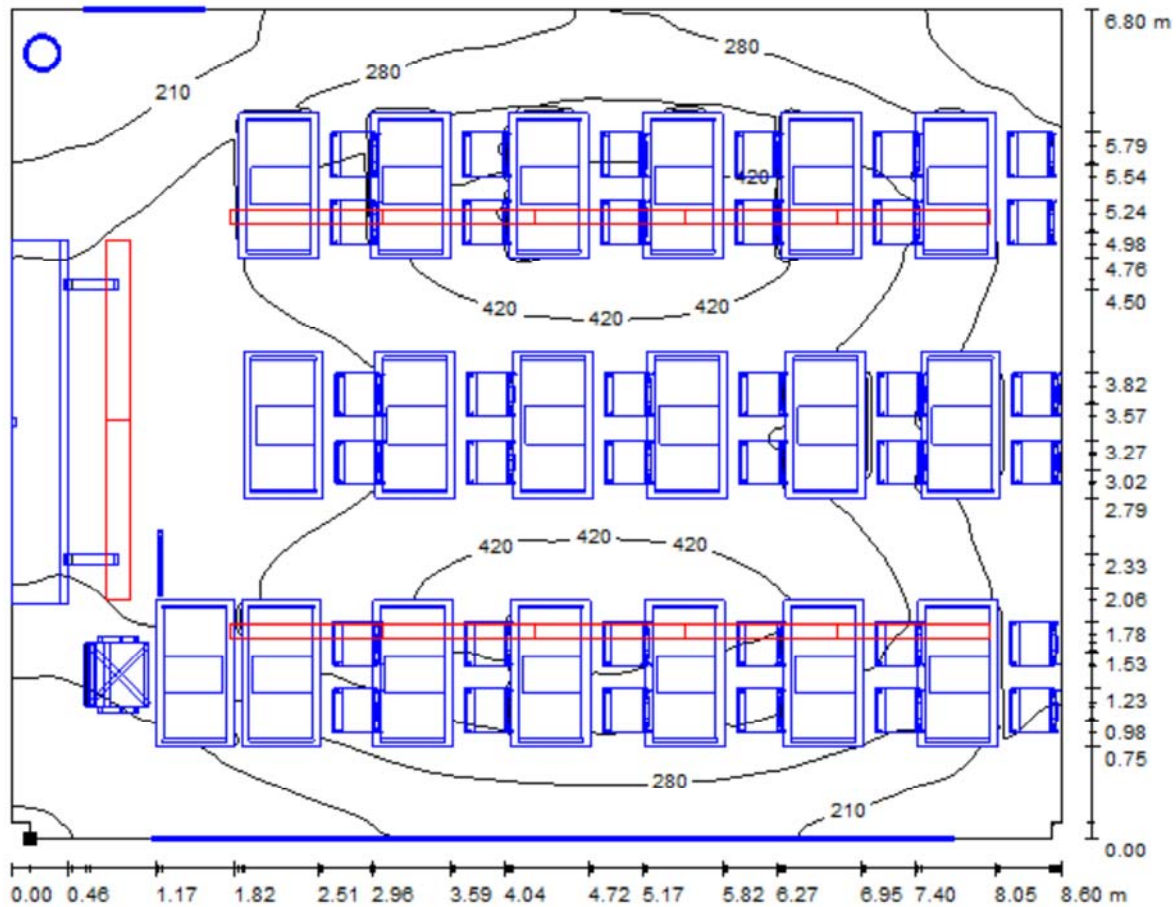
Klasa / 3D Rendering



Pristine
Republic of Kosova

Operator Gani LATIFI
Telephone +37744110557
Fax
e-Mail gani.latifi@gmail.com

Klasa / Workplane / Isolines (E)



Values in Lux, Scale 1 : 62

Position of surface in room:
Marked point:
(53.550 m, 90.156 m, 0.850 m)



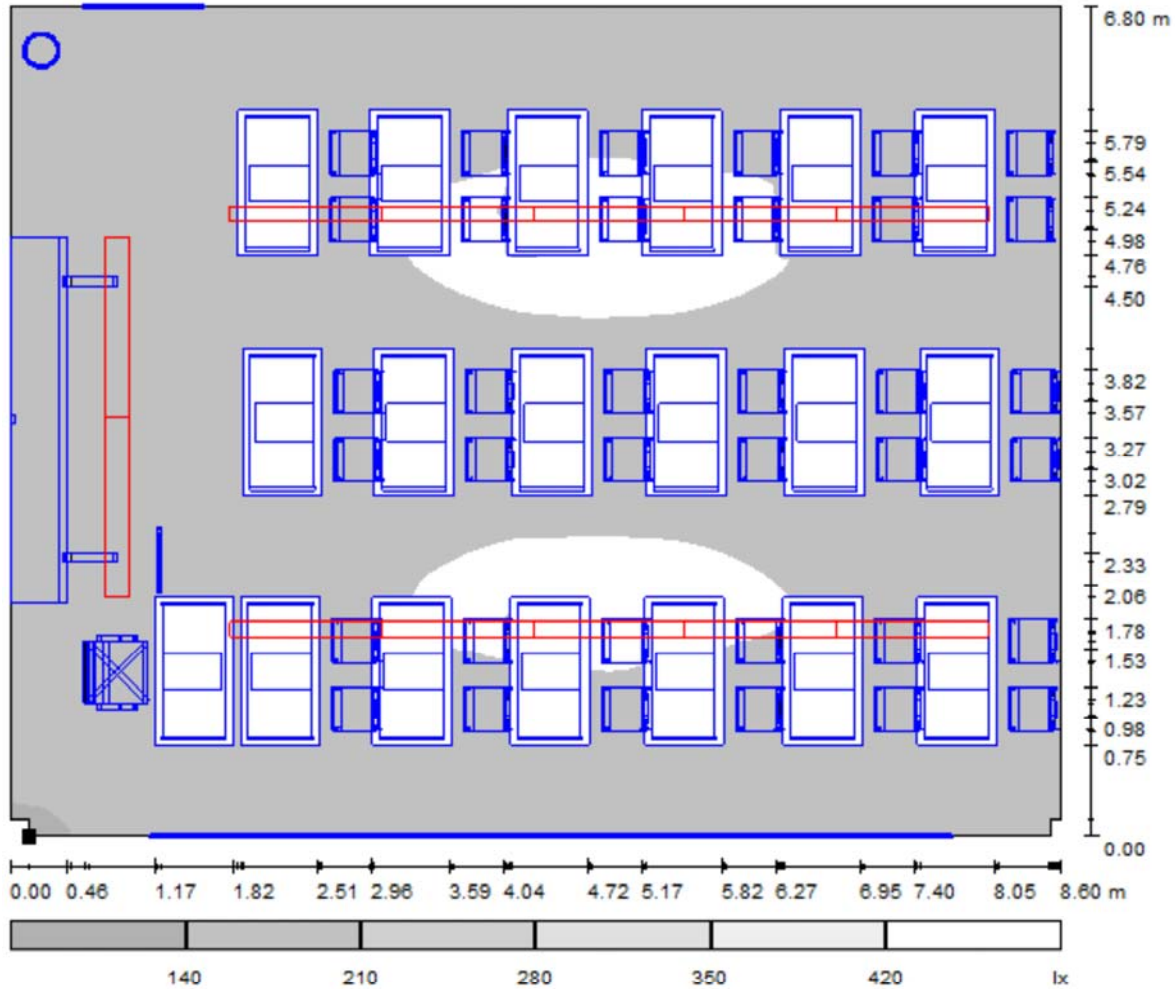
Grid: 128 x 128 Points

E_{av} [lx]	E_{min} [lx]	E_{max} [lx]	u0	E_{min} / E_{max}
307	131	464	0.428	0.284

Pristine
Republic of Kosova

Operator Gani LATIFI
Telephone +37744110557
Fax
e-Mail gani.latifi@gmail.com

Klasa / Workplane / Greyscale (E)



Scale 1 : 62

Position of surface in room:
Marked point:
(53.550 m, 90.156 m, 0.850 m)



Grid: 128 x 128 Points

E_{av} [lx]
307

E_{min} [lx]
131

E_{max} [lx]
464

u_0
0.428

E_{min} / E_{max}
0.284